

EQR65 SERIES LED WARNING BEACONS Alloy Base

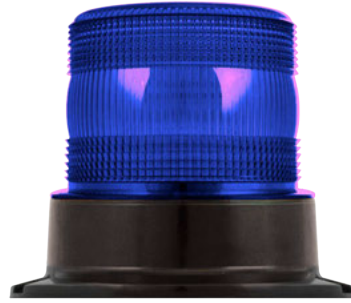
R65

R10

Three-Bolt Fixing



EQR65ABM R65 Amber



EQR65BBM R65 Blue



EQR65GBM R10 Green



EQR65RBM R10 Red



Mounting Accessory Kits



EQR65-DM DIN-Mount



EQR65-SB Single-Bolt



EQR65-MM Magnetic Mount

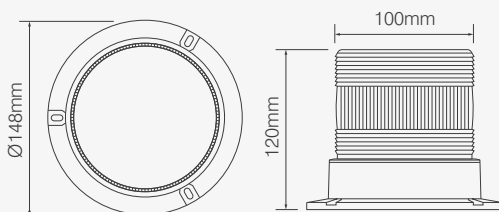


NEW

EQR65-FD Flexible-DIN Mount

- High-power LED warning beacon
- Durable aluminium base
- ECE R65 approved
- Two flash patterns; quad and rotating flash
- Three year warranty
- Easy-fit mounting accessory kits available

Voltage range	10–30VDC
Flash patterns	Quad, Rotating
LED type	12x 3-Watt
Lens material	Amber polycarbonate
Base material	Black alloy
Accessory material	Polycarbonate
Visibility	360°
Warranty	Three years
Approval	ECE R10, ECE R65
Ingress protection	IP67
Current draw	2.5A nominal



120 x 148mm